



PN:B3FU5024SY



# Fitting Guide & Owners Manual

## Fuso Canter Wide Cab

### 9/2019on with Safety Pack

Deluxe 3 Protection Bar  
VEHICLE FRONTAL PROTECTION SYSTEM (VFPS)  
FOR AIR BAG & ADR COMPLIANT VEHICLES

# Index

---

## Pages 3-5

ECB's Benefits  
Product Care

## Pages 6-7

Stage 1 - Vehicle Testing and Preparation  
Stage 2 - Remove Bumper  
Stage 3 - Chassis Preparation  
Stage 4 - Vehicle Indicator Lights  
Stage 5 - Light Wiring  
Stage 6 - Sonar Relocation

## Pages 8-9

Stage 7 - Mount installation  
Stage 8 - Protection Bar Installation  
Stage 9 - Light Fitment and Wiring  
Stage 10 - Sonar Cover Fitment  
Stage 11 - Connect, Check and Test

## Pages 10-11

Final Checks & Fitting Kit  
Finished Product

## Pages 12-13

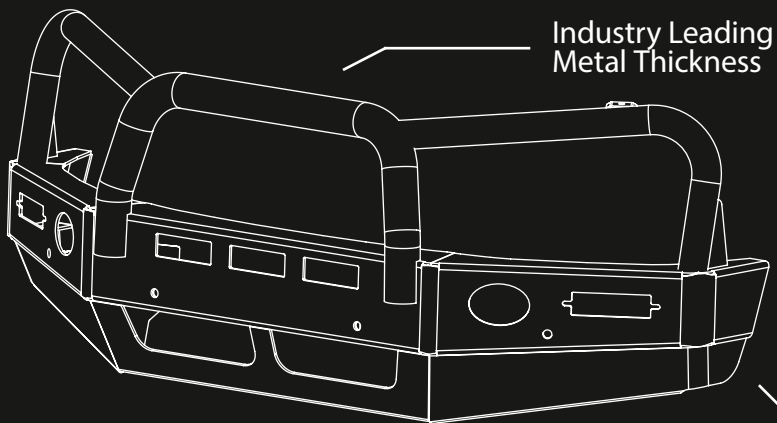
Warranty Registration

## Pages 14-15

Notes

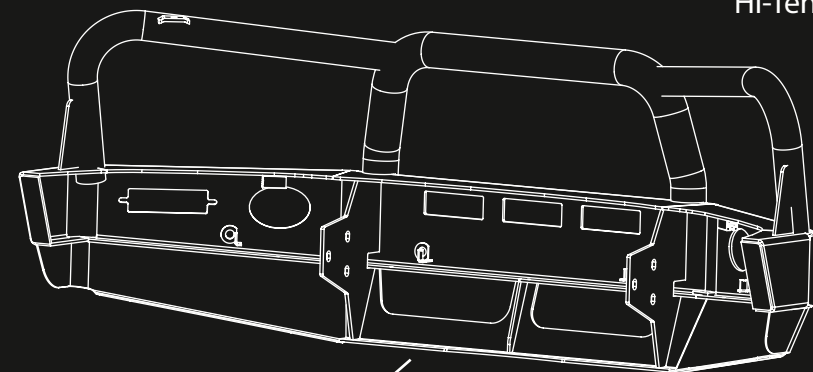
# The Features of Custom Alloy

---



Industry Leading  
Metal Thickness

6mm Thick  
Hi-Tensile Alloy



Unmatched  
Strength

Fully Welded  
Construction

# Custom Alloy's Benefits

---

## Built to Perform - Not to a Price

Custom Alloy are proud to claim that their channels are not jigsaw puzzles that are bolted together, or even multiple sections welded together. Where any welding is required, it is done to the highest standards by qualified welders, not machines.

## Anti-Corrosive Nature of Alloy

The composition of Custom Alloy's alloy has a very high resistance to corrosion. Rust not only looks unappealing but greatly reduces the strength of the metal. Rust can and will weaken the structural integrity of a steel bullbar effectively rendering it useless over time.

## Australian Made

Established in 1971, we utilise over 46 years of experience designing, engineering and building products in Australia to suit Australian conditions. We can ensure the best quality controls and help support the local economy and employ over 90 proud Australians.

## Weight Saving Benefits

An Custom alloy bullbar is typically half the weight of a steel bullbar. Unnecessary suspension upgrades are not required. The reduced weight also contributes to increased fuel economy and less wear and tear on tyres, suspension and braking components.

## Welds That Work

Custom Alloy uses only the strongest welds and welding techniques to ensure every product is as structurally sound as possible. MIG (Metal Inert Gas) welding techniques are employed ensuring the welds are as thick as the thickest section of alloy's being joined together.

## Lifetime Warranty

Custom Alloy provide a lifetime warranty and consumer guarantee on all of our manufactured products. This guarantee highlights the confidence in our ability and provides complete peace of mind for your purchase for the lifetime you own your vehicle.

# Product Care

---

## Polished Products

Being a premium mirror polished finish, regular maintenance will be required to keep that iconic Custom Alloy shine. We recommend using ECB brand of Aluminium Polish. This formula has been tried and tested and in our opinion is the world's best standard.

Directions: Apply a small quantity of Aluminium Polish to a clean soft cloth and rub the metal surface. The longer the rubbing the brighter the surface becomes. Wipe off Aluminium Polish with clean soft cloth. Also suitable for motorised buffing machines.

Note: There are more specific details on the polish bottle. Please read before use.

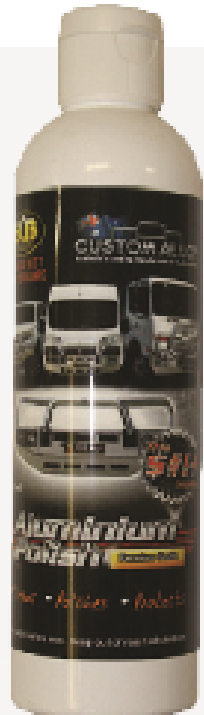
## Powdercoated Products

Our powdercoated finishes are very low maintenance. Infact there is actually very little you will ever need to do for this product. Just clean it as you would your car and it will stay looking good as new.

## ECB Aluminium Polish

When you're looking for that showroom finish look for your polished automotive products, you can depend on the no compromise quality of East Coast Bullbars Aluminium Polish. This specifically designed product is the best polish available and we guarantee that this \$#!+ works. With over 40 years of manufacturing polished alloy products we have trialled a large range of different polishes on the market and believe without a doubt that nothing beats the finish quality of East Coast Bullbars Aluminium Polish.

East Coast Bullbars Aluminium Polish is excellent for use by hand and is ideal for polished bullbars, nudge bar and stainless steel products. This polish will clean, polish and protect your product from the elements whilst bringing your products back to that showroom finish look.



# B3FU5024SY

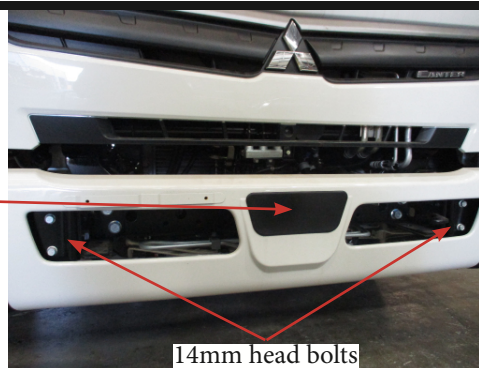
## Stage 1

- Test drive vehicle to ensure all driver assists are correctly working and to gauge effectiveness. Park on a flat level surface.
- Apply parking brake, ensure wheels are straight ahead.
- Unwrap protection bar and disconnect steel mounting bracket. Retain bolts.
- Ensure these instructions are left with the vehicle owner and/or operator.



## Stage 2

- Remove two (2) 14mm head bolts (per/ side) from the bumper bar opening and remove bumper.
- From center of bumper, remove sonar cover. Retain screws for refitment later in the process.



## Stage 3

- Remove tow hook by removing two (2) 22mm head bolts.
- Remove fastener bracket by removing one (1) 14mm head bolt on passengers side and two (2) 14mm head bolts on the drivers side.



# FUSO CANTER 9/2019 ON

## Stage 4

- Remove two (2) screws from the back of indicator/park light located inside the door opening per/side.
- Remove light by sliding it outwards.

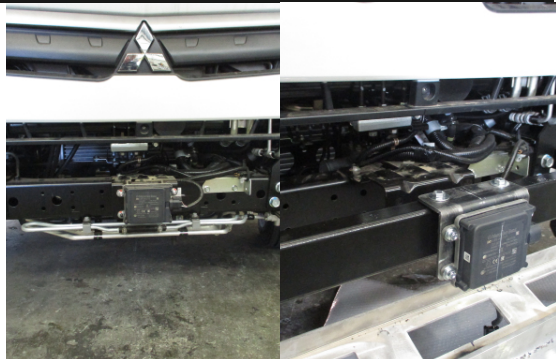


## Stage 5

- Disconnect indicator and parking lights on vehicle. Install quick click wiring harnesses (supplied) between disconnected harness and indicator / park lights on vehicle. Run wiring out from under lights ensuring clearance from sharp edges and moving parts.
- Route wiring through the cavity under the headlight away from any sharp edges.

## Stage 6

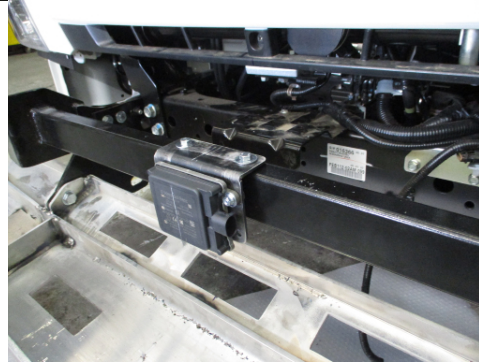
- Remove sonar unit from bracket by removing three (3) 10mm head nuts.
- Relocate sonar unit onto sonar bracket (supplied) with original equipment nuts. Fit sonar and bracket onto steel mounting bracket using two (2) M8 x 30mm bolts, spring washers and flat washers (supplied). Reconnect wiring.



# B3FU5024SY

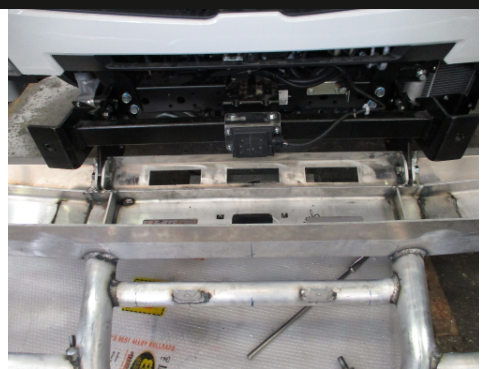
## Stage 7

- Fit Custom Alloy steel mounting bracket (supplied) onto chassis rail using two (2) M10 x 1.5 x 40mm bolts, flat washers, and nyloc nuts in top holes (supplied) (per/side). Fit three (3) M12 x 1.75 x 40mm bolts, flat washers, and nyloc nuts (supplied) (per/side).
- Align mounting bracket to vehicle chassis using a level. Ensure front of mounts are vertical.
- Tighten all bolts.



## Stage 8

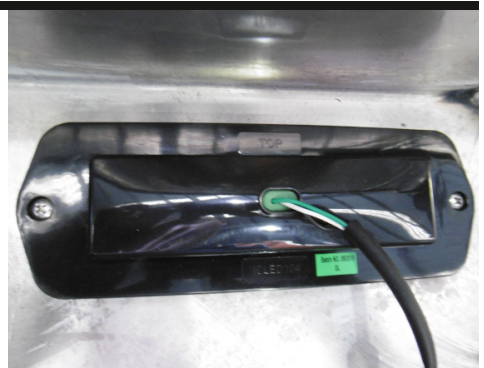
- Fit protection bar onto steel mounting bracket using two (2) 9/16" x 2 1/2" bolts, flat washers and nyloc nuts (supplied) in lower pivot points (tighten nuts to just tight).
- Lift protection bar up to correct position.
- Check positioning of protection bar against cabin and sonar unit.



## Stage 9

- Fit Custom Alloy LED indicator / park lights into protection bar as per instructions supplied with the LED indicator kit. NOTE: Ensure park light is to top.
- Connect wiring and check indicator/ park light for correct operation.
- Zip ties wiring up to avoid wiring sagging under the bullbar.

CAUTION: Allow enough wiring for the bullbar to tilt.

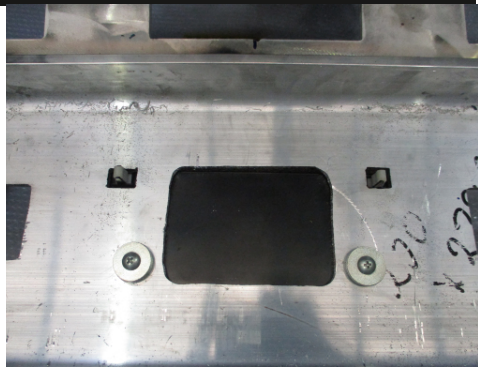




# FUSO CANTER 9/2019 ON

## Stage 10

- Install sonar cover to center of Custom Alloy bullbar using original equipment screws and 6mm alloy spacer washers (supplied).
- For top clips, install onto rear of channel two (2) 2mm alloy washers (supplied). Place zip tie (supplied) through hole in cover and secure. The zip tie will stop the cover from falling out.



## Stage 11

- Tilt protection bar into position and install eye bolts. Tighten firmly.
- Check all electrical components for correct operation.
- Place the tilt cab sticker (supplied) on the rear of the cab adjacent to the cab release mechanism.
- Test drive vehicle to ensure vehicle systems are working as per manufacturers specifications.



# Final Checks & Installation Kit

## Ensure Number Plate is Clearly Visable

Note: When fitting/refitting the licence plate to the vehicle, ensure there is no obstruction to licence plate vision in accordance with local authorities. If required relocate licence plate to an alternate location.

## Further VFPS Notes

- 1. Do not attach VFPS to the vehicle using anchorages not intended for this purpose (e.g. engine mounting bolts).
- 2. Do not use this product for any vehicle make or model, other than those specified by the VFPS manufacturer.
- 3. Do not remove the plaque or label from the VFPS.
- 4. Do not modify the structure of the VFPS in any way.
- 5. No accessory or fitment should project forward of the VFPS forward profile.
- 6. Ensure these instructions are left with the vehicle owner and/or operator.

## Installation Kit

1 - Sonar mount	4 - M10 Nyloc nuts
2 - 30 x 11 x 6mm round washer plates	2 - M8 x 30mm bolts
2 - 25 x 25 x 3mm alloy washer plate	2 - M8 flat washers
6 - M12 x 1.75 x 40mm bolts	2 - M8 spring washers
12 - M12 flat washers	1 - Quick Click Kit (IC17HI500IPDH)
6 - M12 x 1.75 nyloc nuts	4 - 300mm zip ties
4 - M10 x 1.5 x 40mm bolts	1 - Tilt cab sticker
8 - M10 flat washers	

## Attached to Bullbar

1 - Steel mounting bracket	4 - 9/16 flat washers
2 - 3/4 eyebolts	2 - 9/16 Nyloc nuts (attached to bullbar)
2 - 3/4 washers	1 - ECB indicator/park (ICLED104BLK)
2 - 9/16 x 2 1/2" bolts	

# Finished Product

---





# Warranty Registration

---

## Contact Details

Name: \_\_\_\_\_

Address: \_\_\_\_\_

Product: \_\_\_\_\_

Email: \_\_\_\_\_

Phone: \_\_\_\_\_

Work Order Number: \_\_\_\_\_

You can find this on the silver label  
of your Custom Alloy product.

By submitting this registration you automatically subscribe to Custom Alloys mail  
outs. You can unsubscribe at any time.

## Or Register Online

For online registration please go online to [www.ecb.com.au/warranty-registration/](http://www.ecb.com.au/warranty-registration/). If you have any questions please contact our national office on 1800 069 145 or [www.customalloy.com.au](http://www.customalloy.com.au).



PN: B3FU5024SY

Please post to: PO Box 122,  
Margate QLD 4019

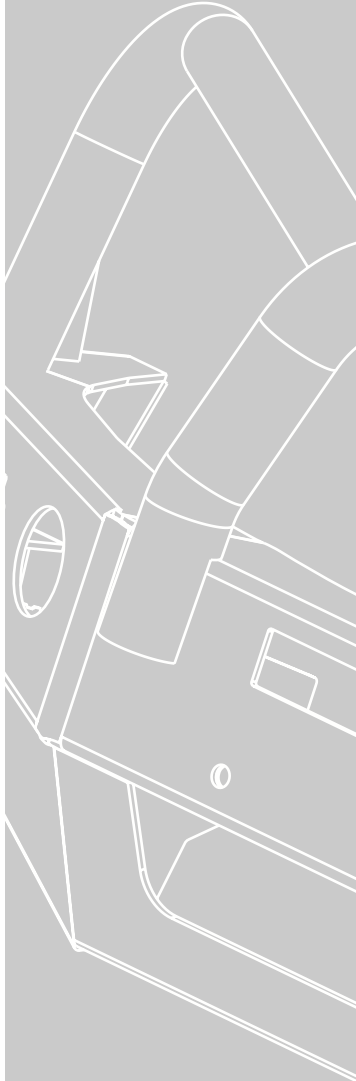
## Notes

This image shows a blank sheet of white paper with horizontal ruling lines. The lines are evenly spaced and run across the width of the page. There are no margins, text, or other markings on the paper.

Full Name

Date

REPLACES: N/A  
REVISED: 26.10.19



1800 069 145  
[www.customalloy.com.au](http://www.customalloy.com.au)

# **Strongest Built Australian Made Lifetime Warranty**

29 Snook St, Clontarf QLD 4019  
PO Box 122, Margate QLD 4019